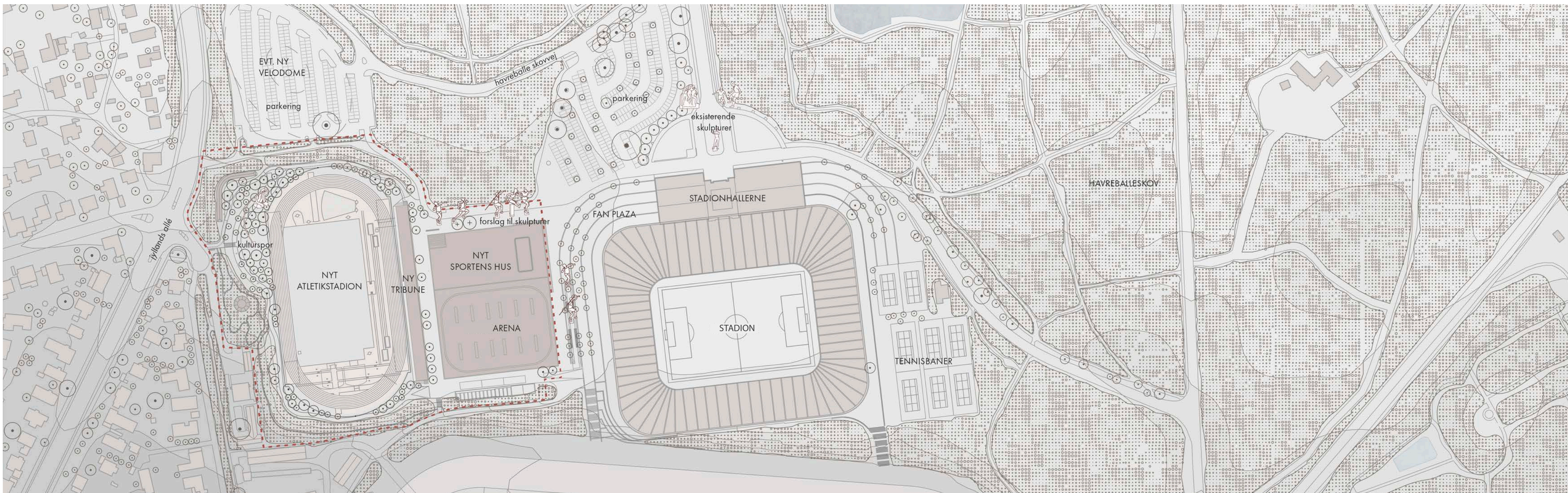


# NYT ATLETIKSTADION & SPORTENS HUS

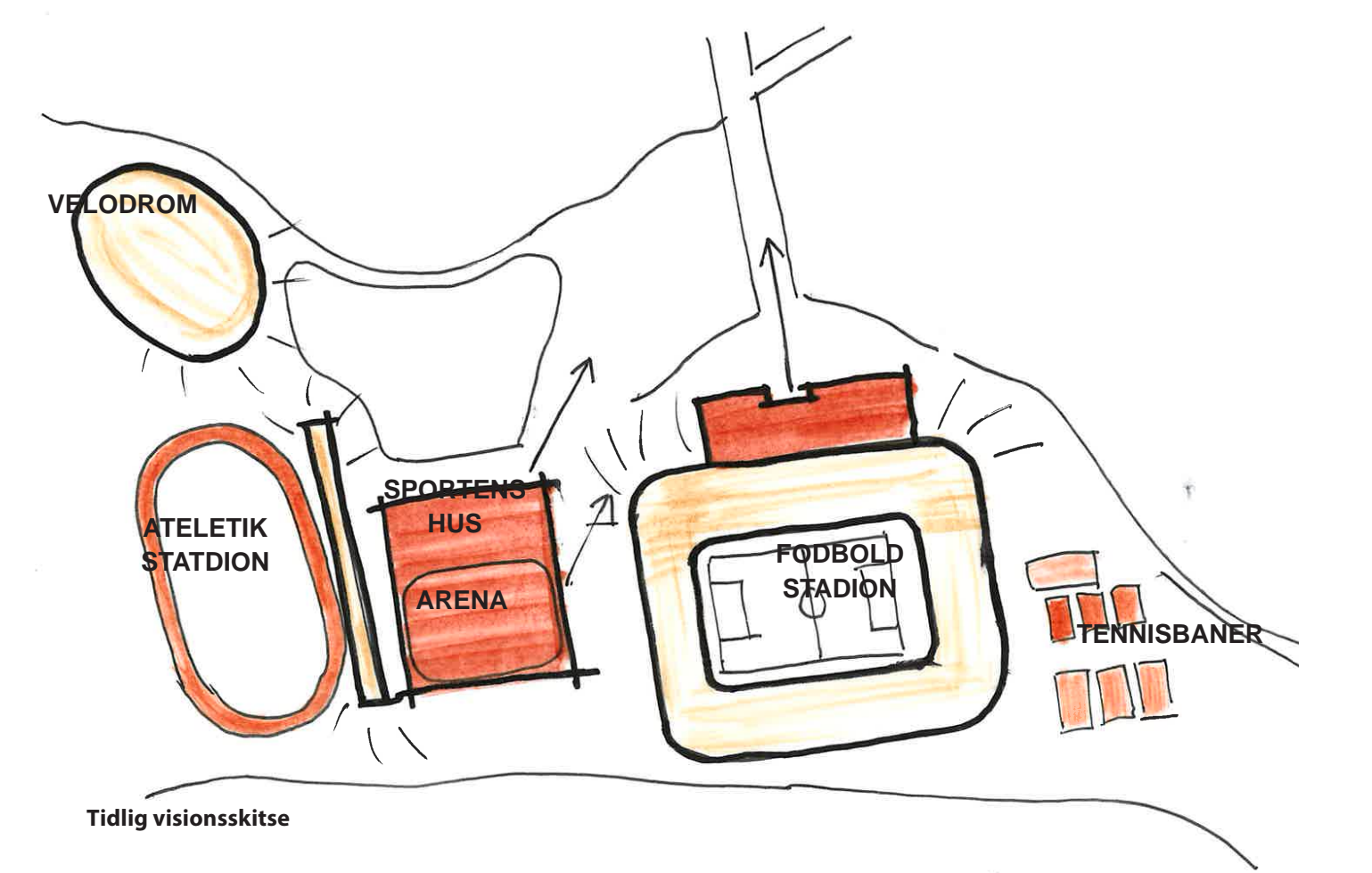
Kongelunden Aarhus



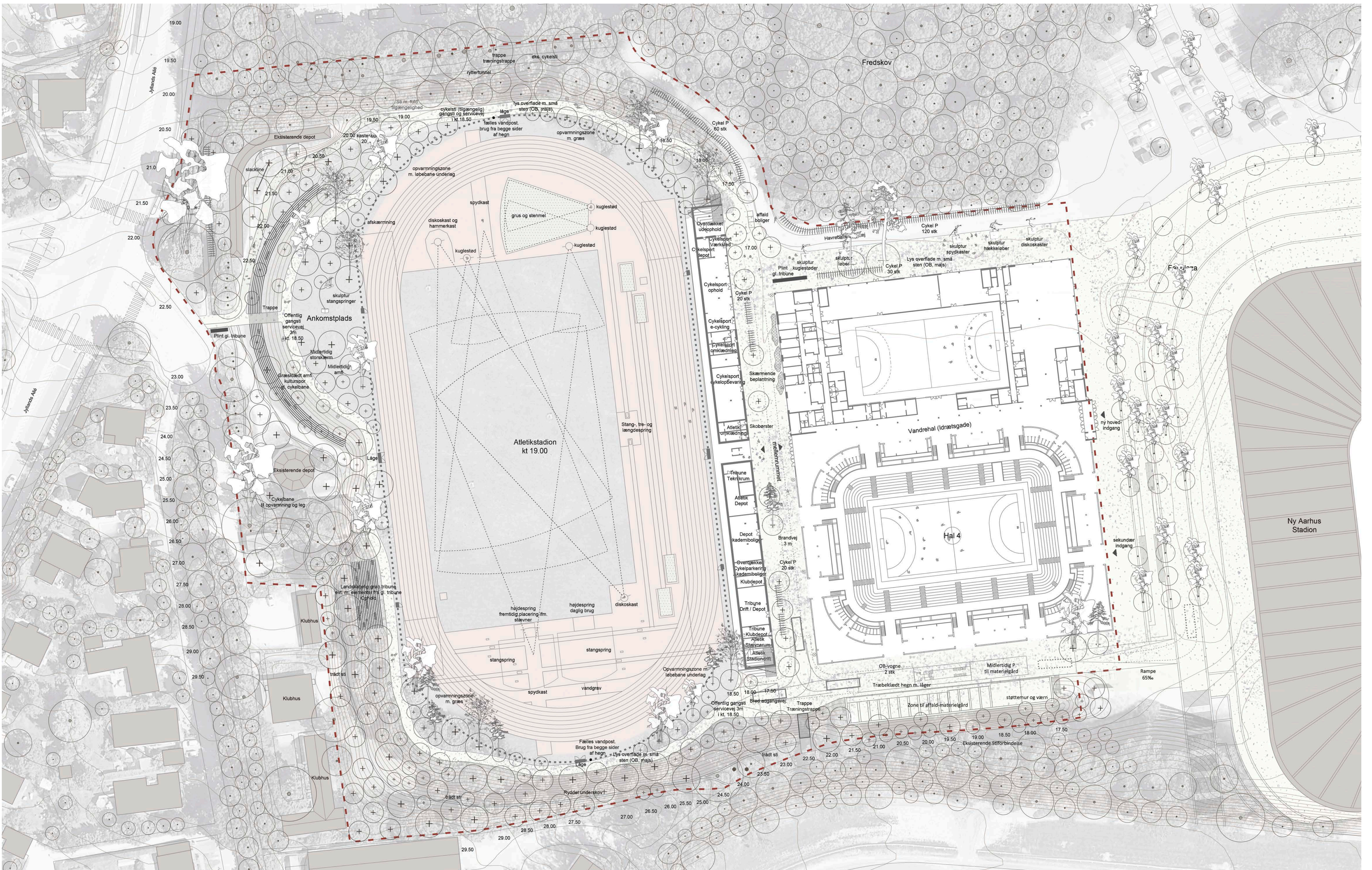
Ankomst fra Fon Plaza (view er fastgjort)



Oversigtsplan - 1:2000



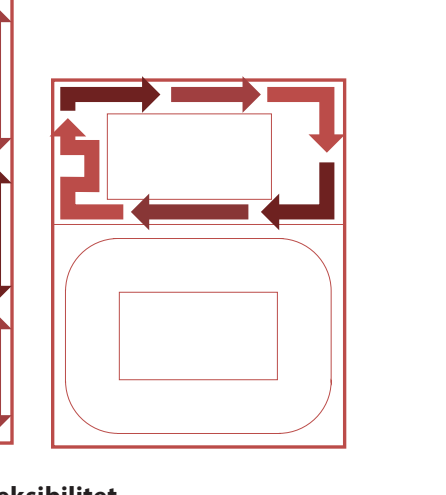
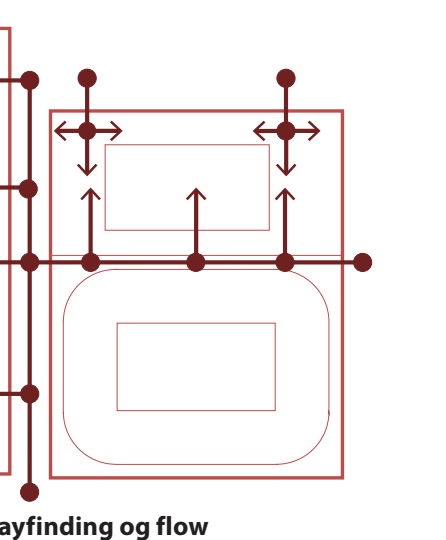
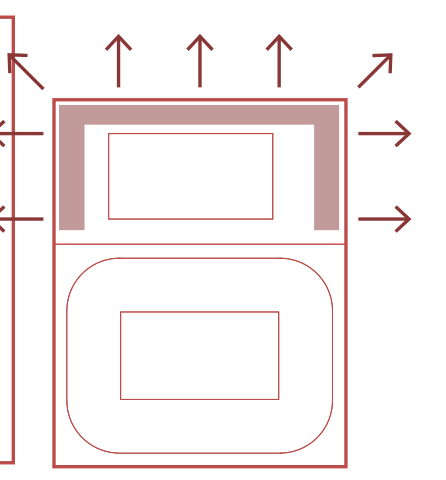
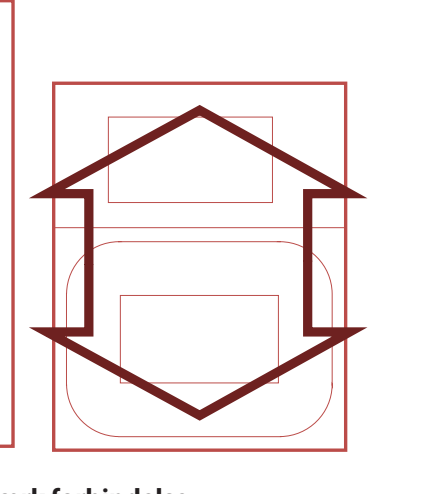
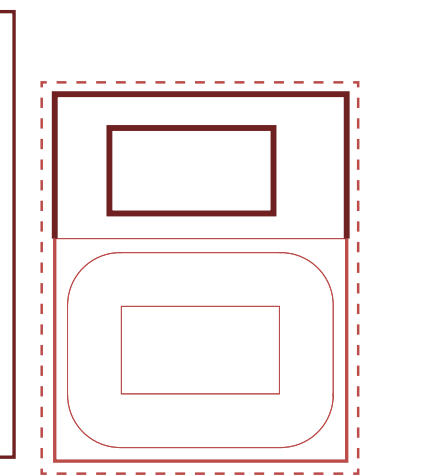
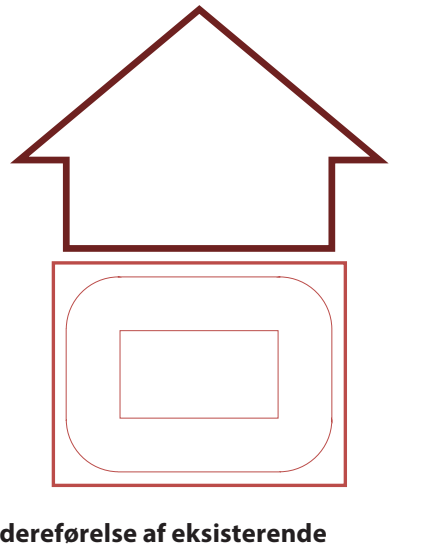
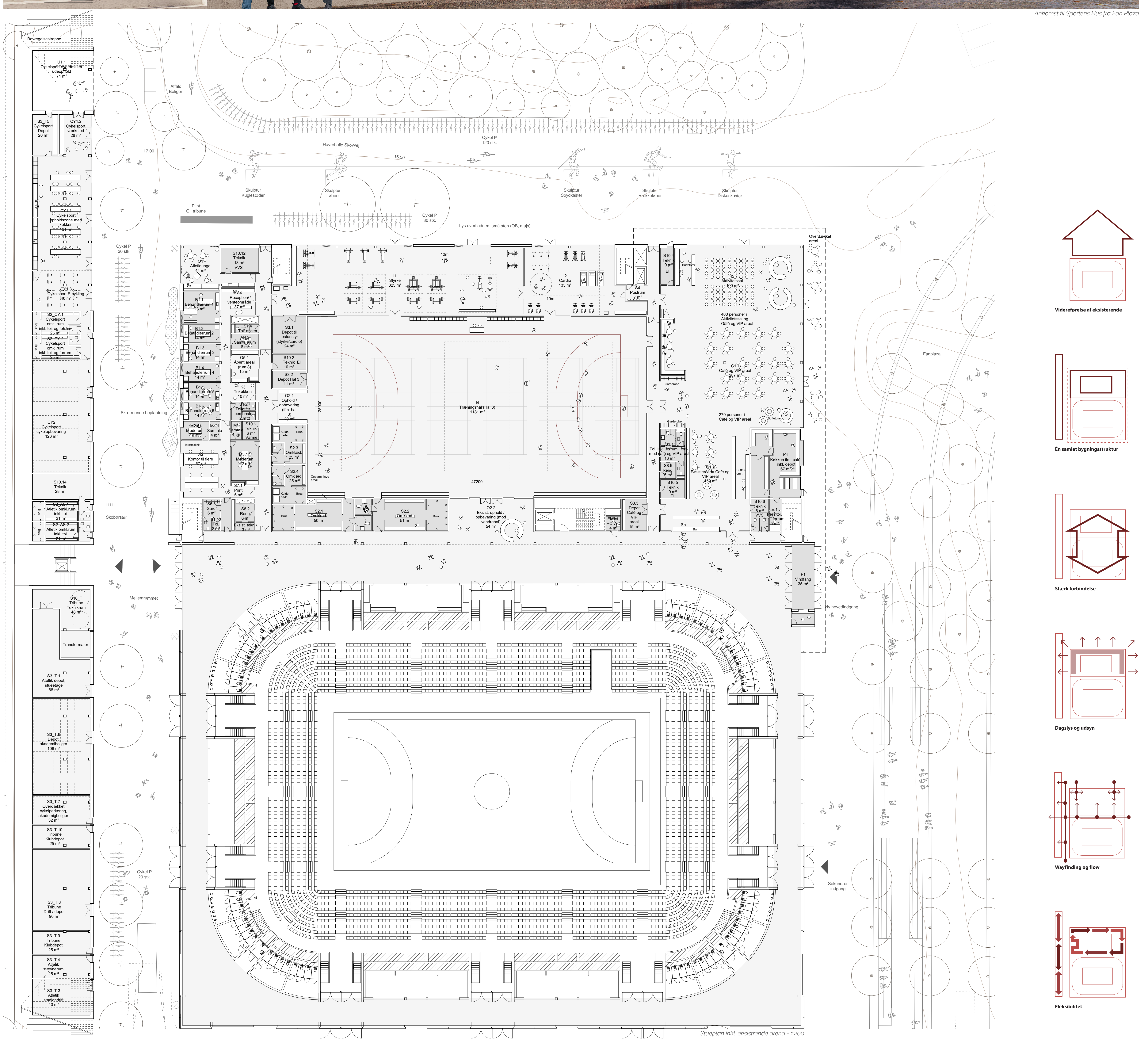
Tidlig visningskitse



Situationsplan - 1:500

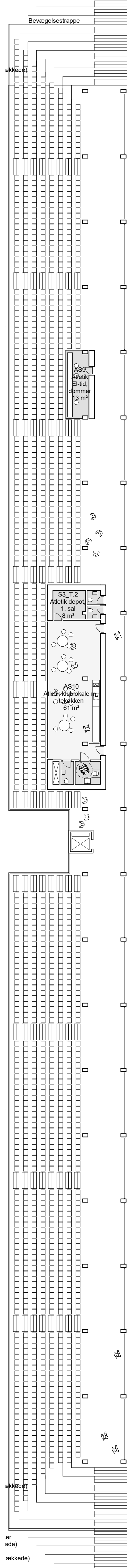


Ankomst til Sportens Hus fra Fan Plaza





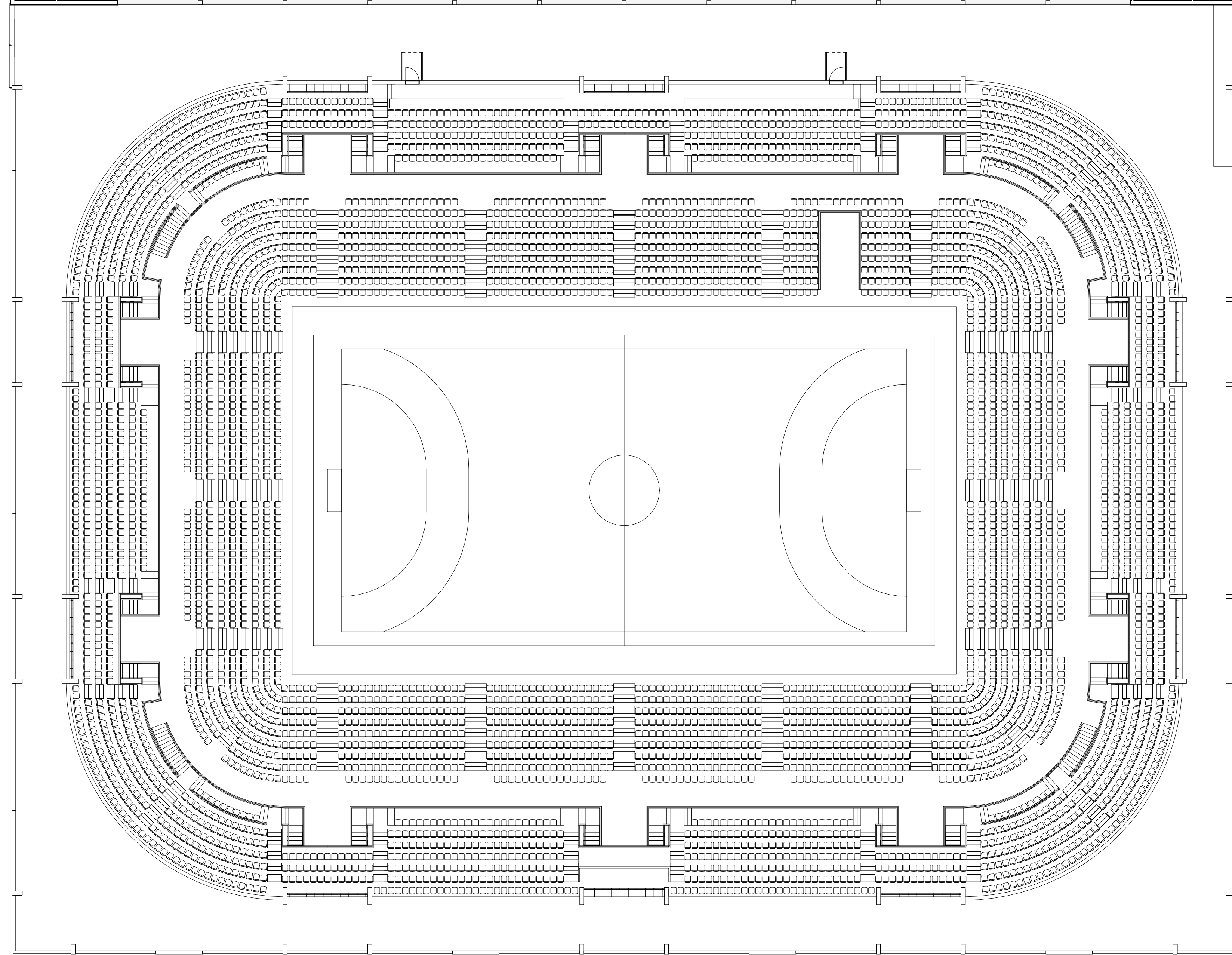
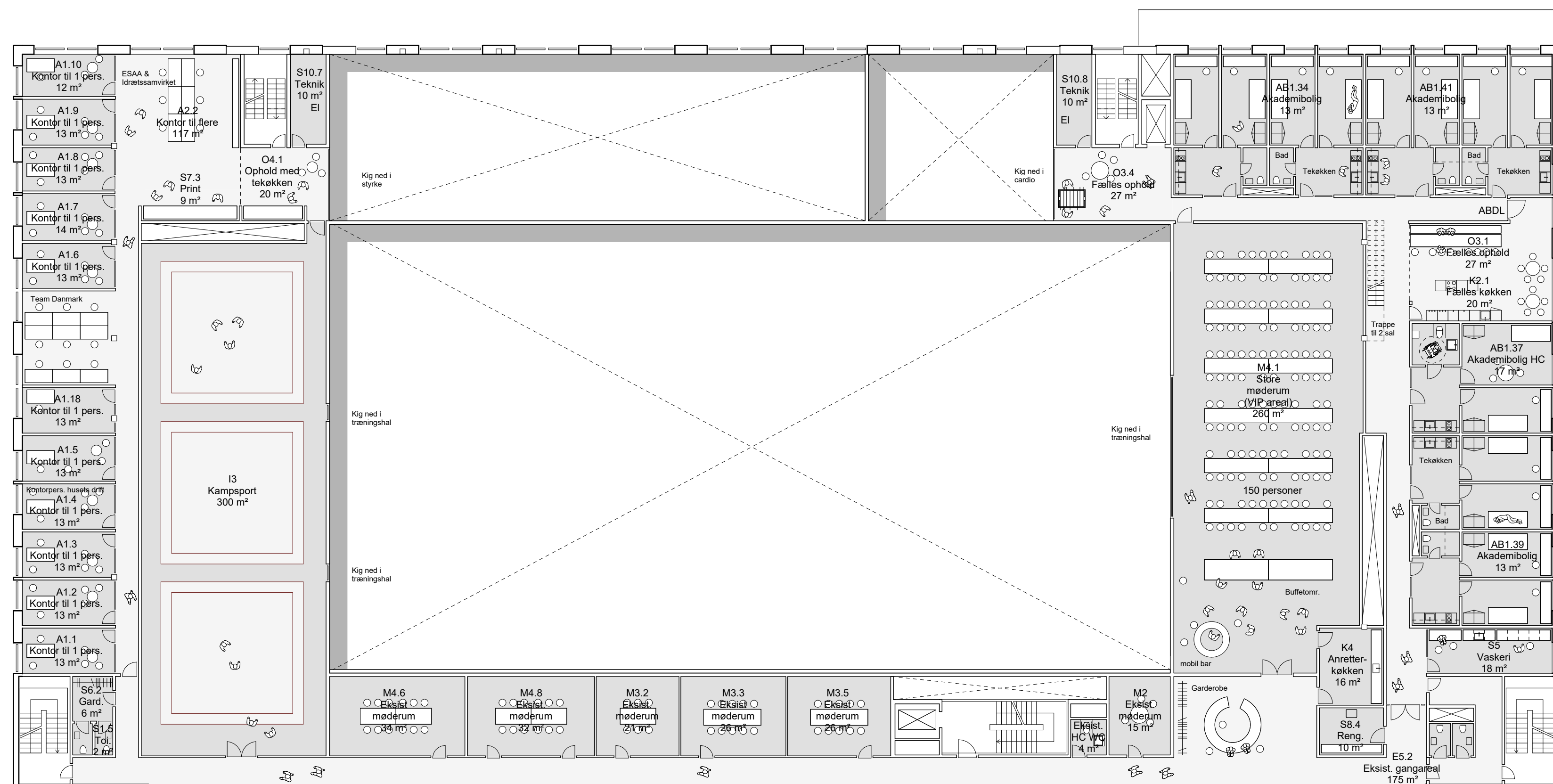
Aktivitetsgaden og byrummet mellem Nyt Sports Hus og tribunebygning



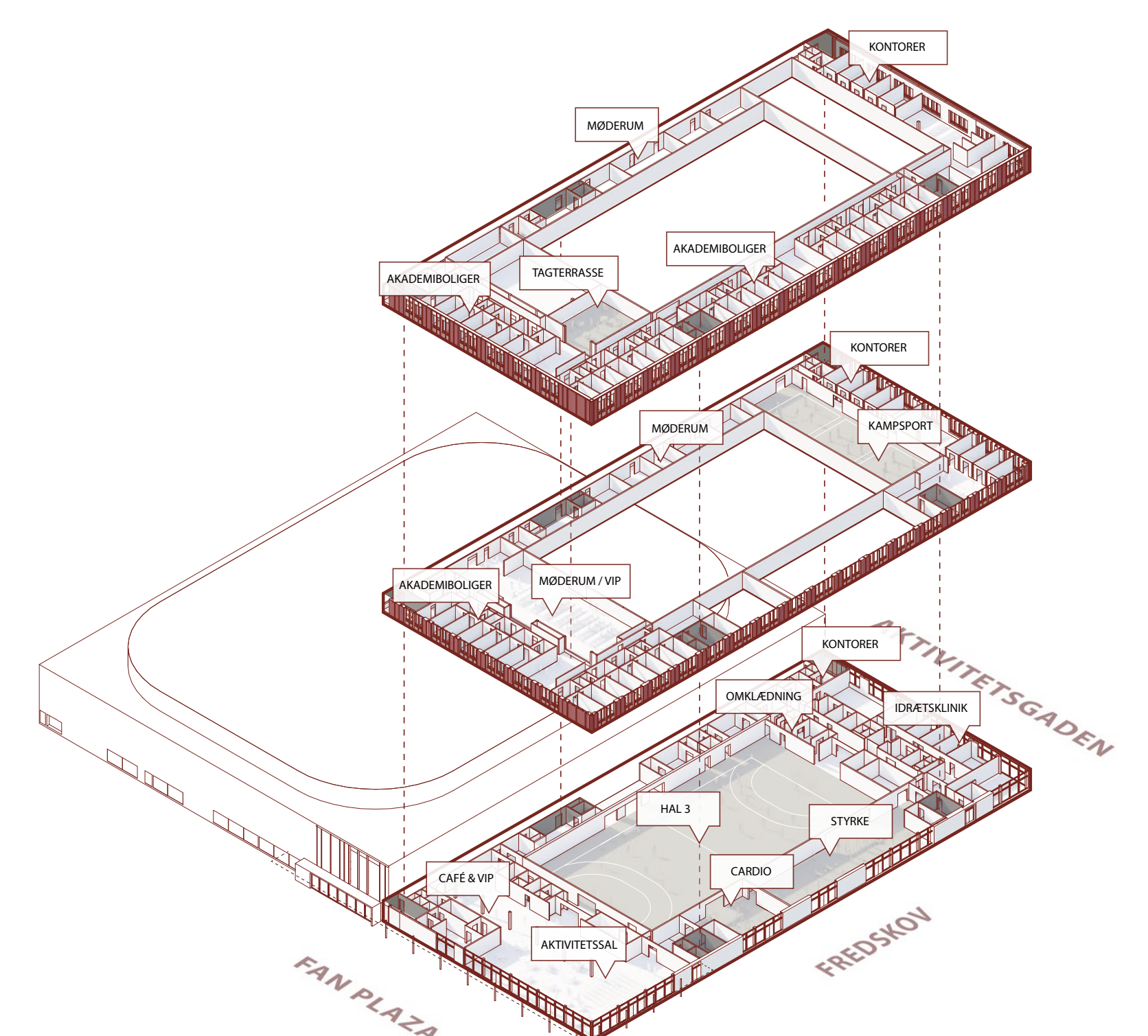
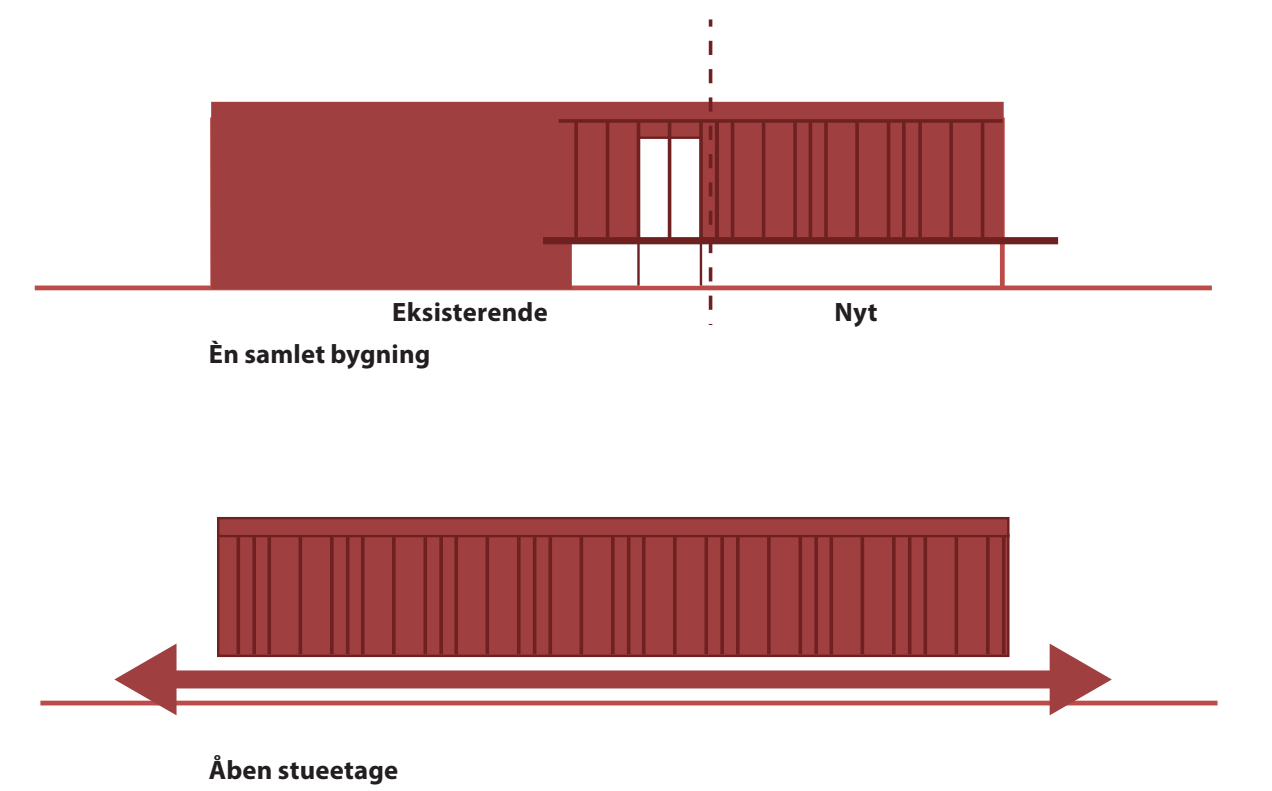
Snit af atletikstadion og tribunebygning - 1200

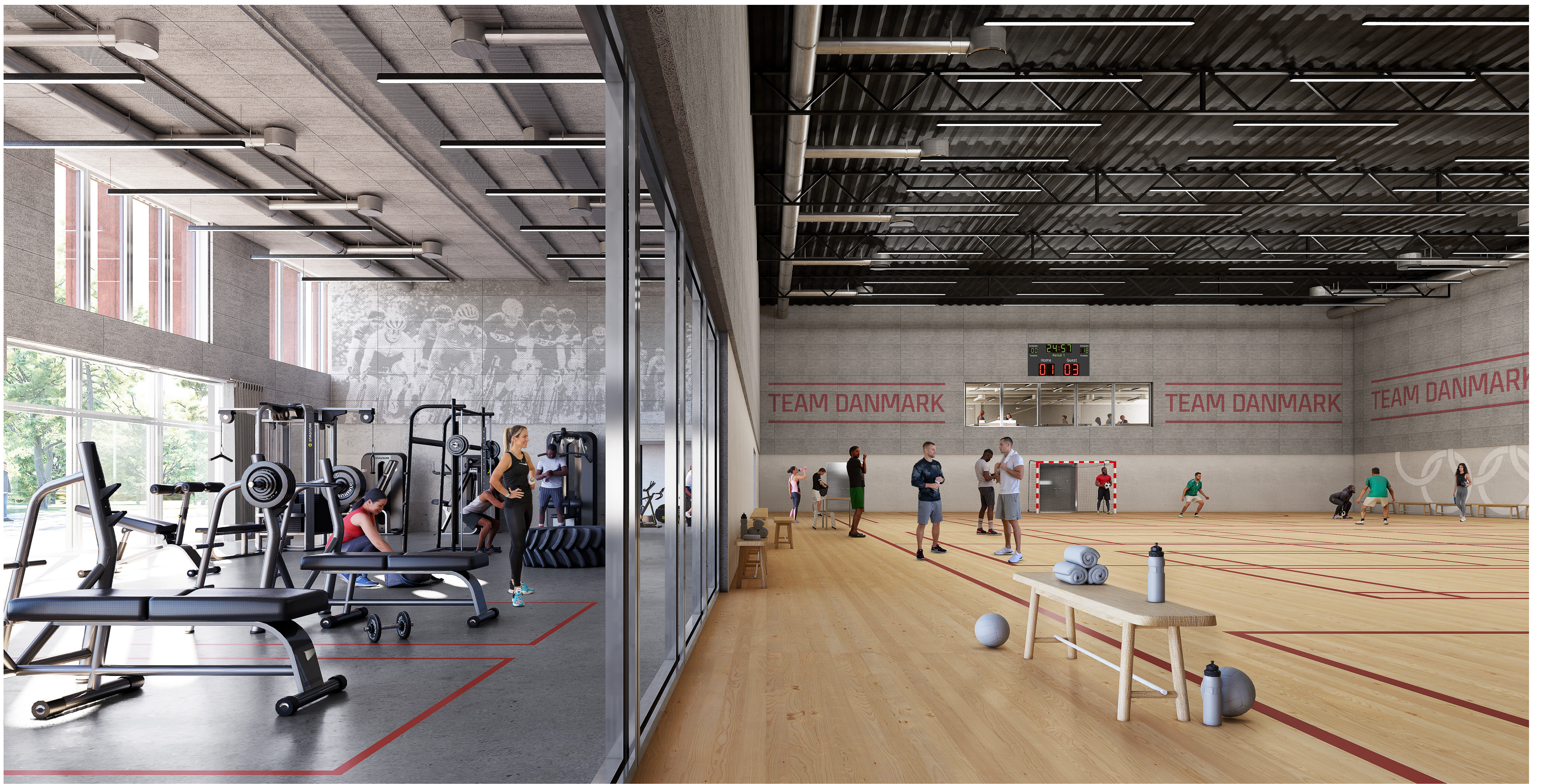


Snit af atletikstadion - 1200

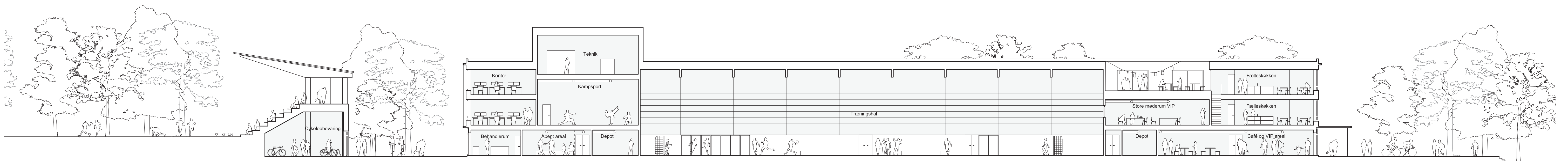


1. sal inkl. eksisterende arena - 1200

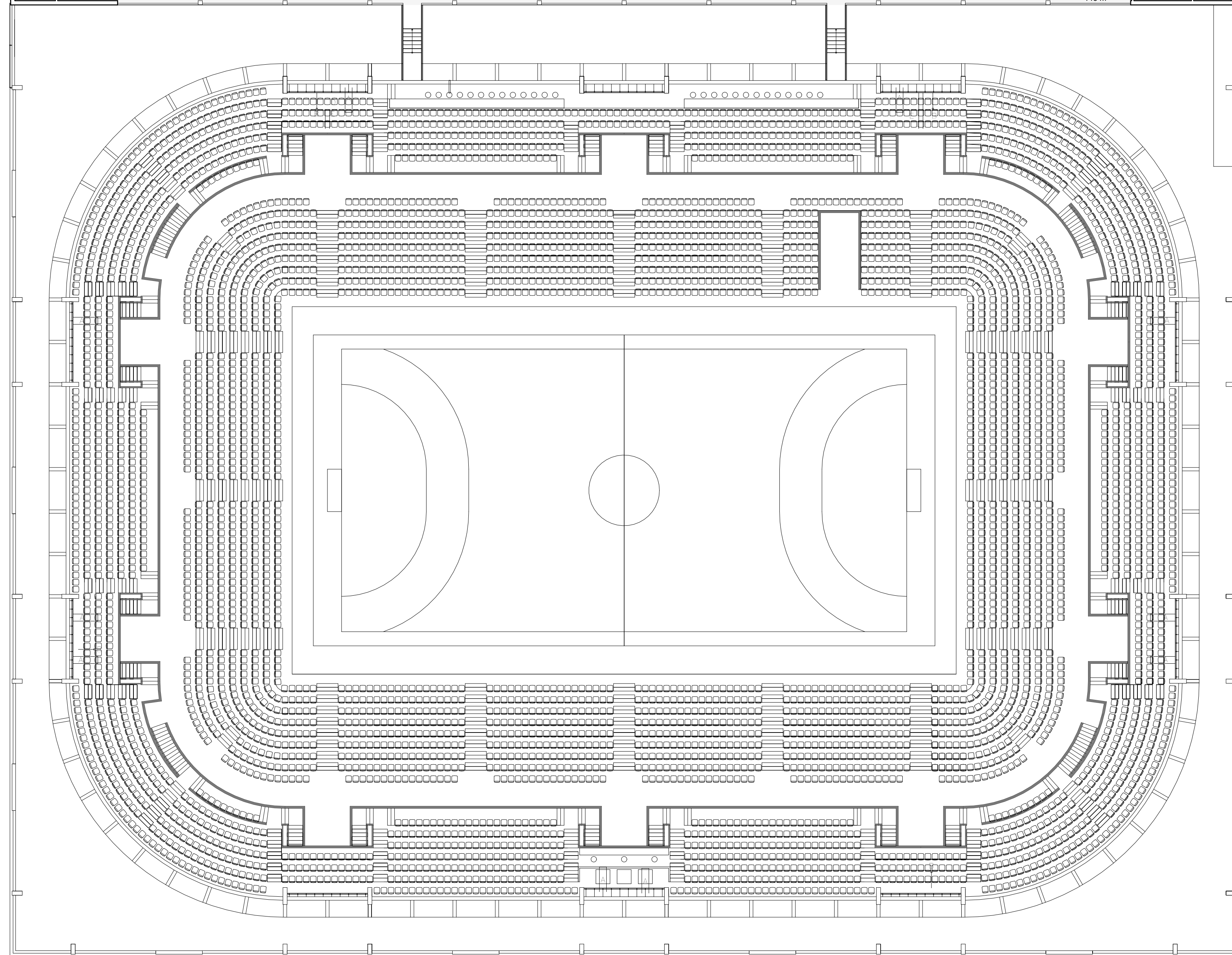
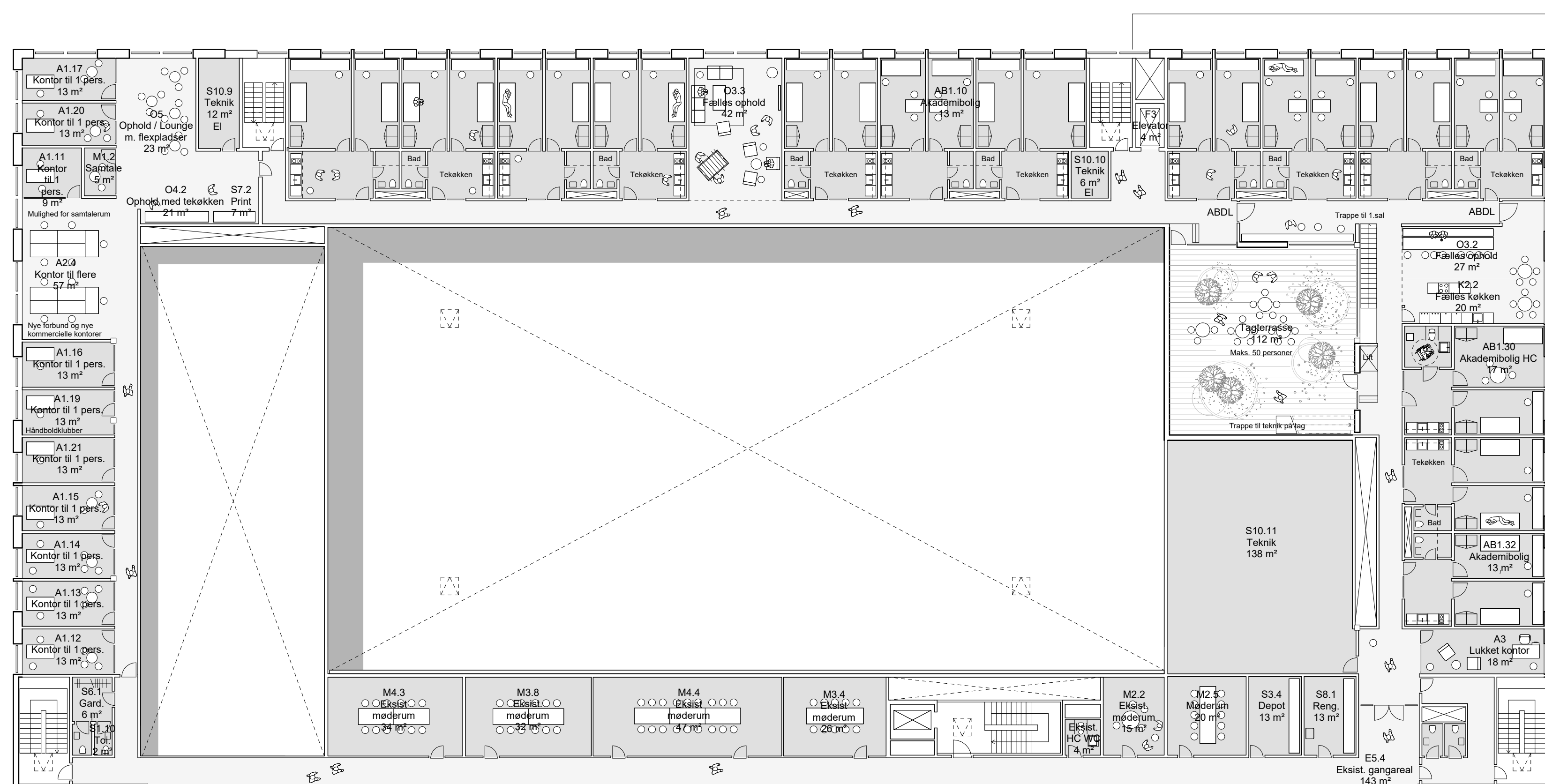
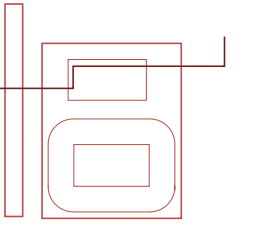




Slyrke og træningshalen



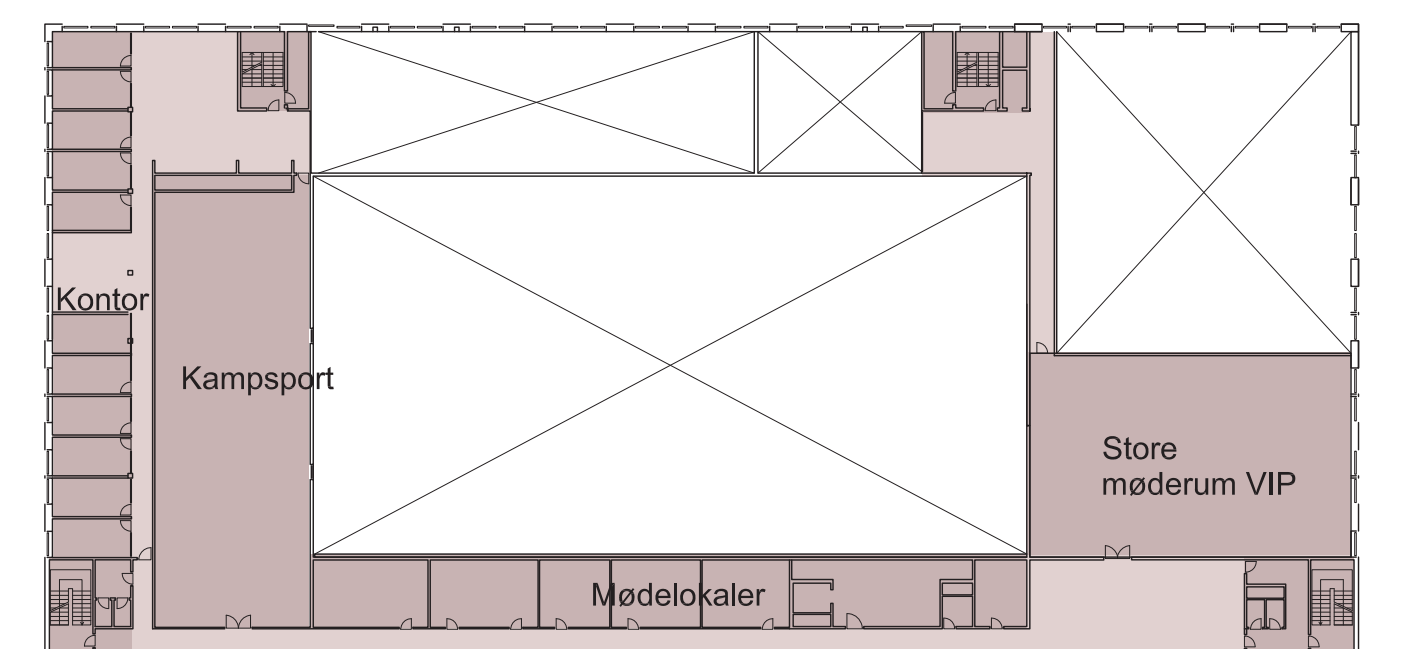
Snit AA - 1200



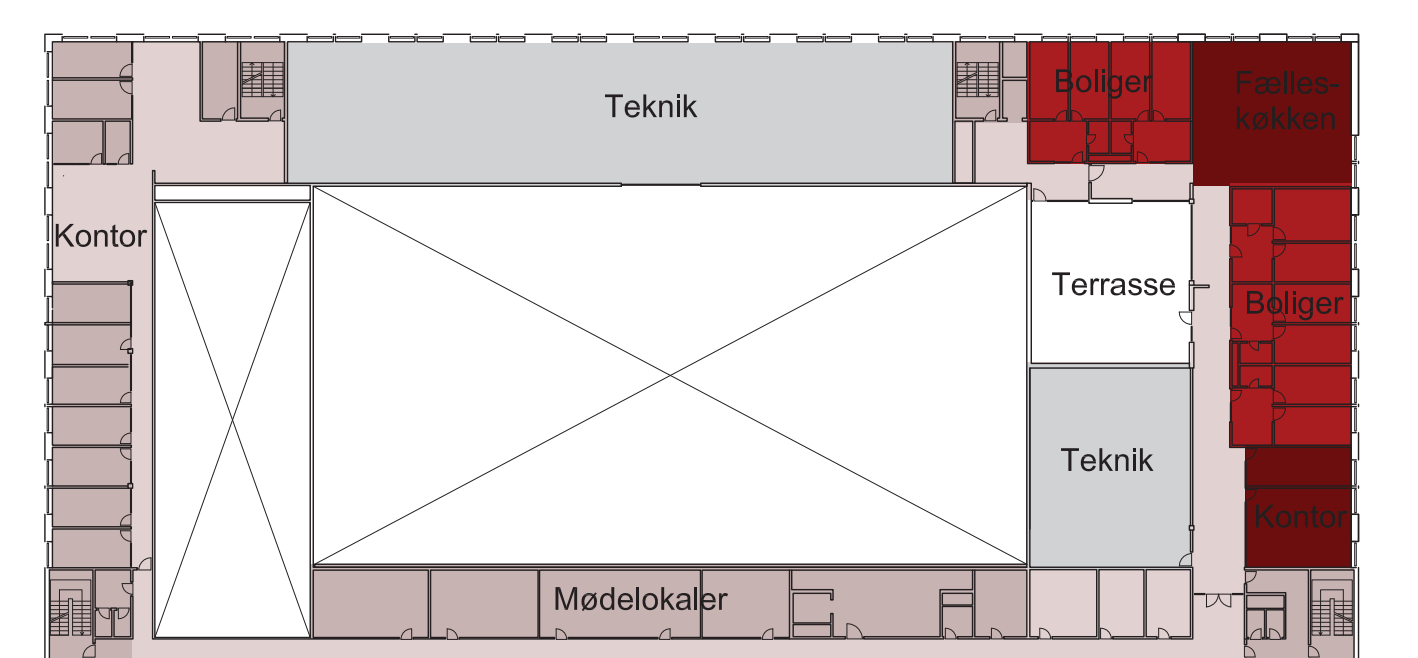
2. sal inkl. eksisterende arena - 1200



Alternativt scenarie stueplan - 1500



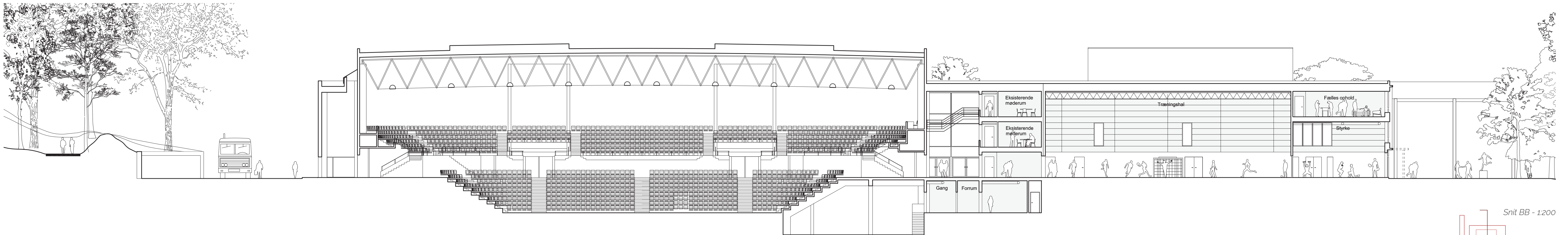
Alternativt scenarie 1 sal - 1500



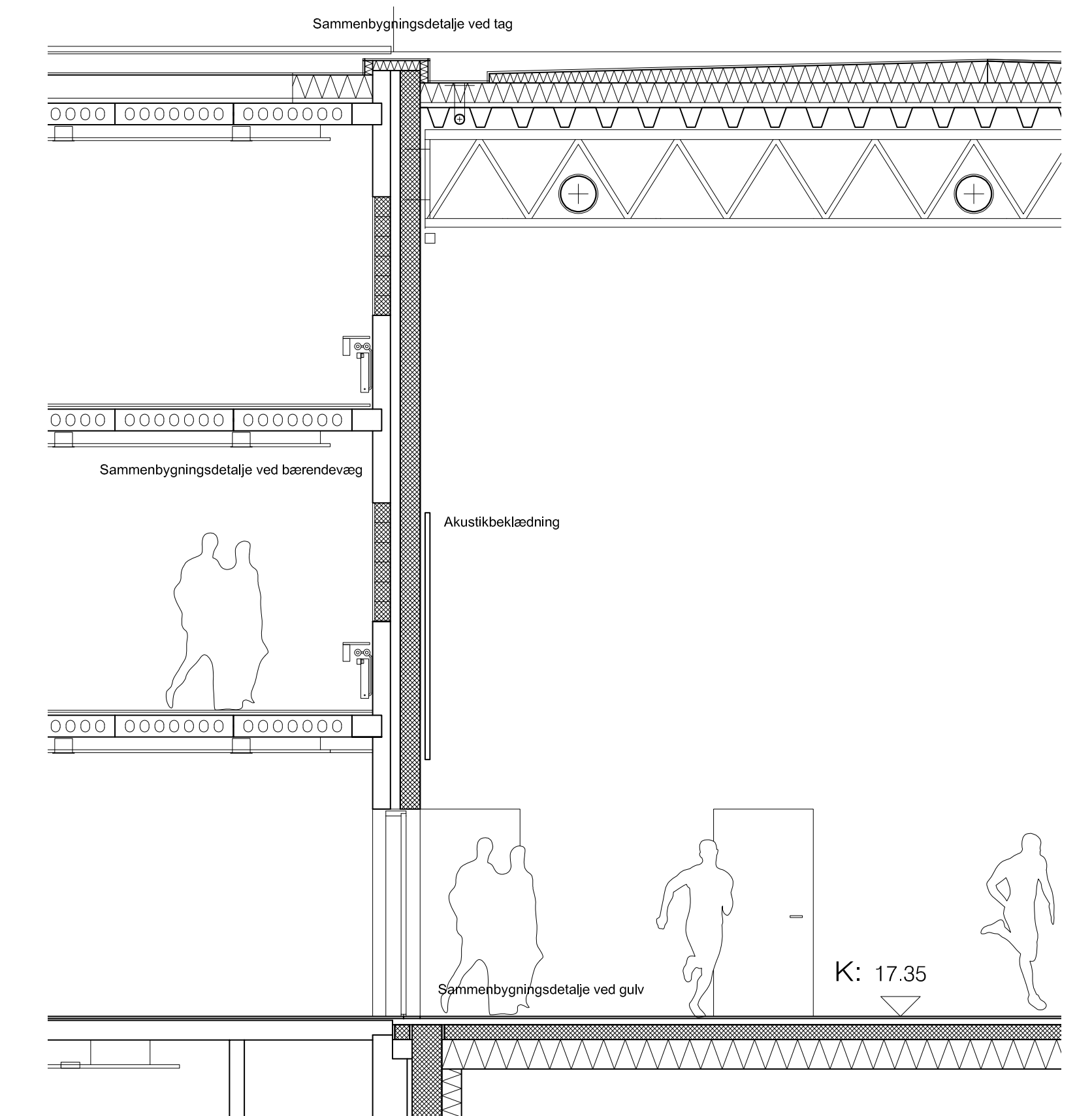
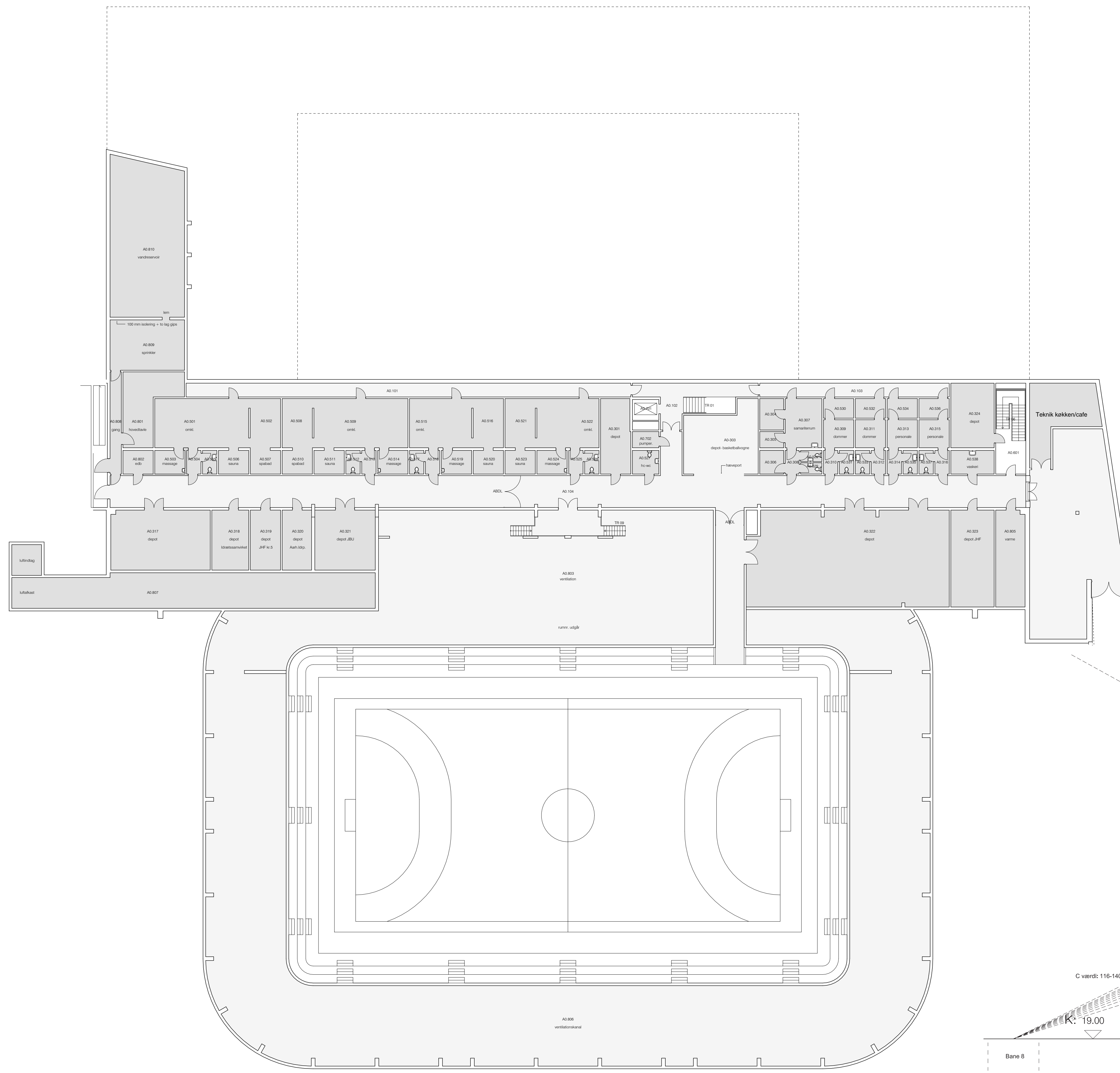
Alternativt scenarie 2 sal - 1500



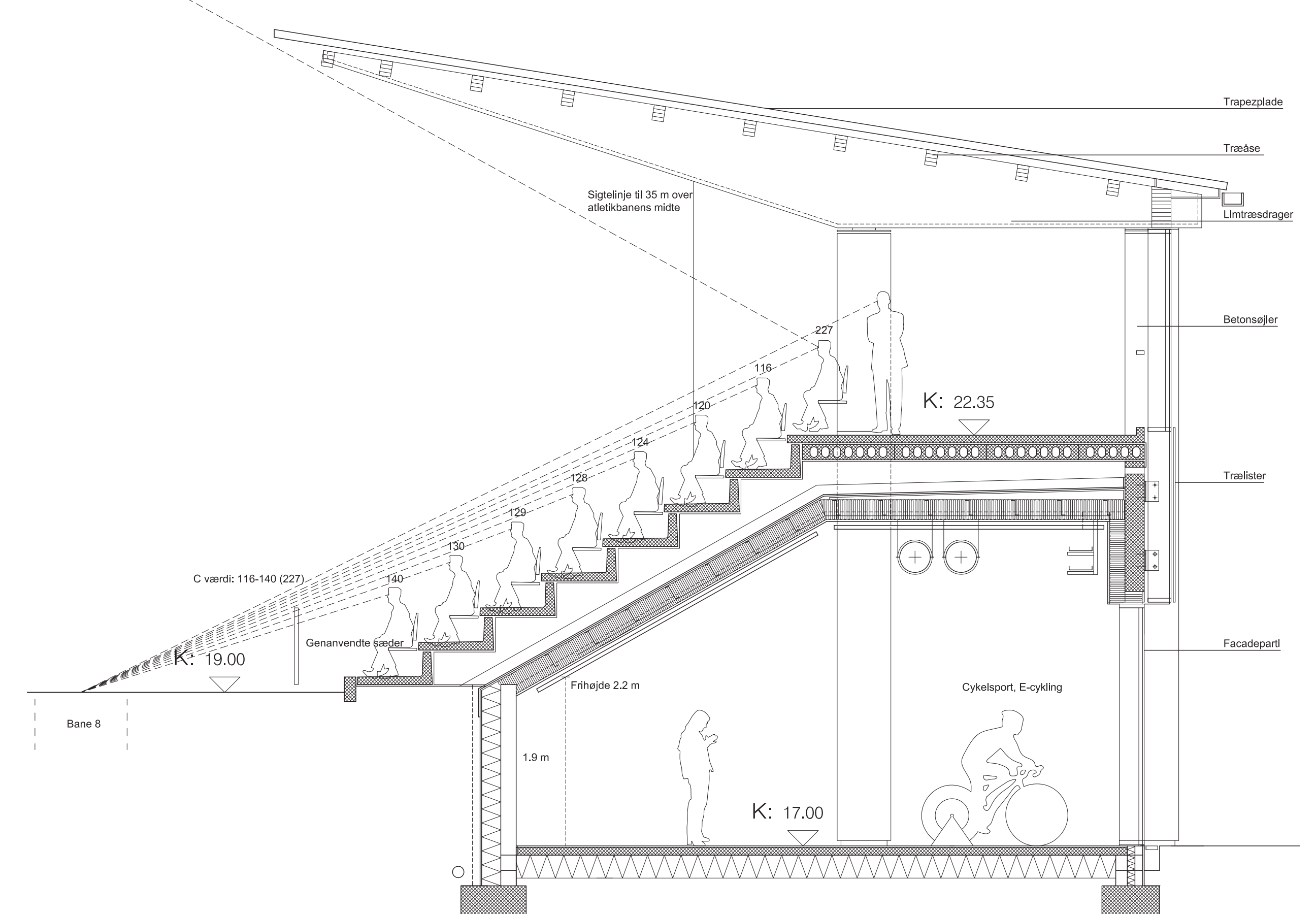
Østvendt fællesstøtten på 2. sal med kontakt til tagterrasse og åben forbindelse til boliger på 1. sal



Snit BB - 1200



Detailsnit for typiske sammenbygningsdetaljer - 150

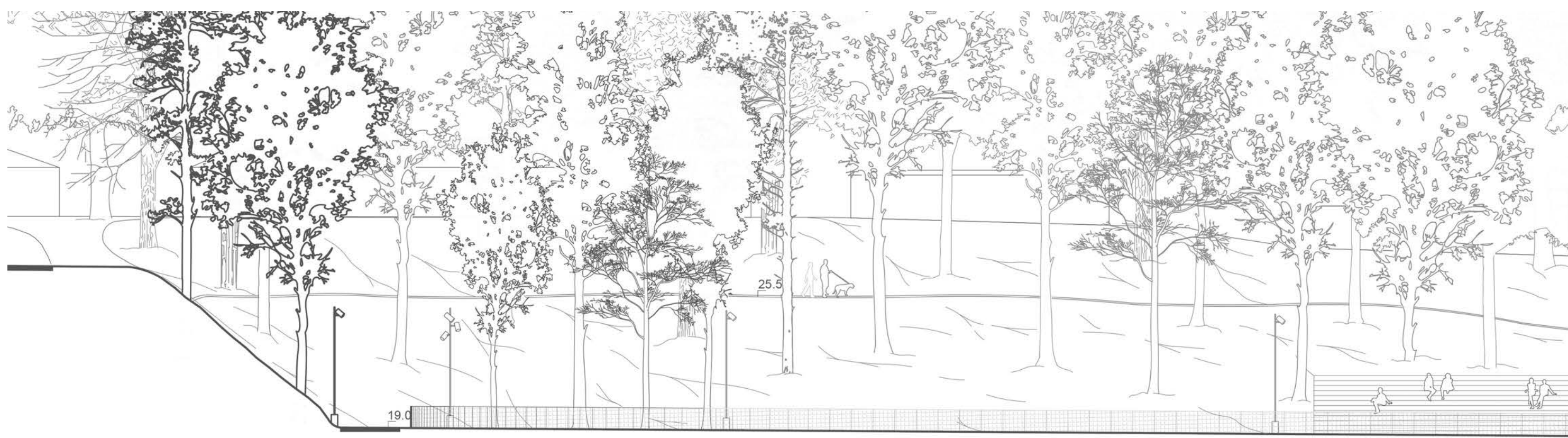


Tværsnit af tribunebygning - 150

Kælderplan inkl. eksisterende arena - 1200



Ankomst fra Jyllands Allé



Snit af atletikstadion - 1200



Snit af atletikstadion - 1200



Sportens Hus, nordfacade - 1200

Tribune, nordfacade - 1200

Tribune, sydfacade - 1200



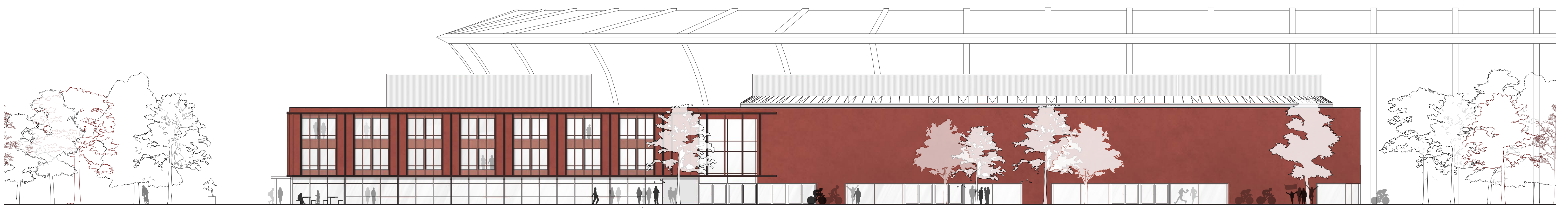
Elbænkens Arena

Hovedbygning Sportens Hus

Call og VIP areal

Aktionsareal

Sportens Hus, østfacade - 1200



Aktionsareal

Elbænkens Arena / Indgang til stadion

Elbænkens Arena

Indgang til Aktionsareal

Elbænkens Arena

Sportens Hus, vestfacade - 1200

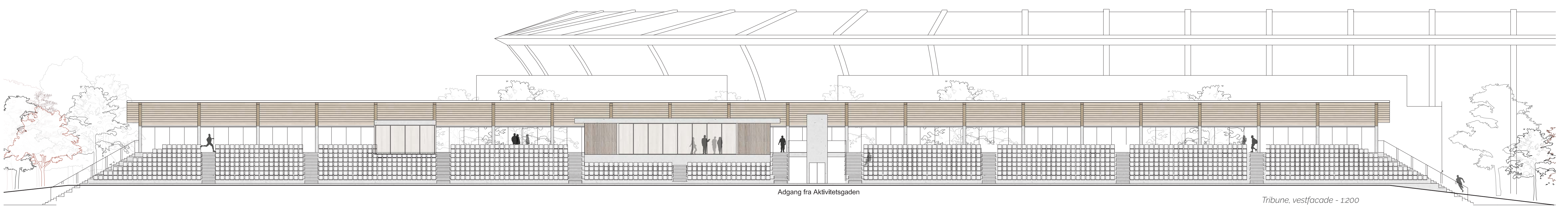


Sidestriben

Adgang til stadion

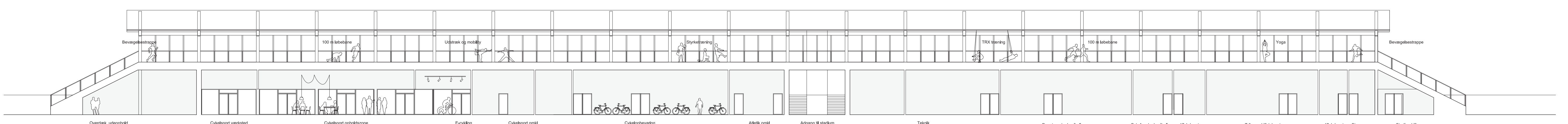
Sidestriben

Tribune, østfacade - 1200



Adgang fra Aktivitetsgaden

Tribune, vestfacade - 1200



Tribune, længdesnit - 1200